



GEARHEADS(POWERFUL TYPE) Frame size 90mm sq. (3.54 in. sq.)

BALL BEARING TYPE

▶ **RATED TORQUE OF GEARHEAD**

MODEL	Speed(rpm)		500	300	200	120	100	60	50	30	20	15	10	9	6	5	3	2	1	
	Ratio	Speed	3	5	7.5	12.5	15	25	30	50	75	100	150	166.7	250	300	500	750	1500	
L9VK□B L9WK□B L9V10D(DECIMAL)	High	kg-cm	17.5	29.2	43.7	65.7	78.8	118.8	142.6	200	200	200	200	200	200	200	200	200	200	
		N-m	1.71	2.86	4.29	6.44	7.73	11.64	13.97	19.60	19.60	19.60	19.60	19.60	19.60	19.60	19.60	19.60	19.60	
	Low	kg-cm	11.9	19.8	29.8	44.7	53.7	80.9	97.0	161.7	200	200	200	200	200	200	200	200	200	200
		N-m	1.17	1.94	2.92	4.38	5.26	7.92	9.51	15.85	19.60	19.60	19.60	19.60	19.60	19.60	19.60	19.60	19.60	
	High	oz-in	243	405	607	912	1095	1650	1980	2777	2777	2777	2777	2777	2777	2777	2777	2777	2777	2777
		oz-in	165	276	413	621	745	1123	1347	2246	2777	2777	2777	2777	2777	2777	2777	2777	2777	

With Decimal Gearhead

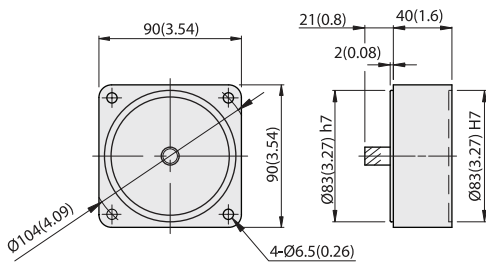
- * The normal torque is that the motor and gearhead are directly coupled.
- * Insert the denominator of reduction ratio in □ of gearhead model name.
- * Actual rotation speed is 2-15% less than synchronous speed.
- * ■ Color indicates that the rotation of gearhead shaft is in opposite direction as output shaft of motor.

DIMENSIONS

Unit : mm(inch)

DECIMAL GEARHEAD

L9V10D

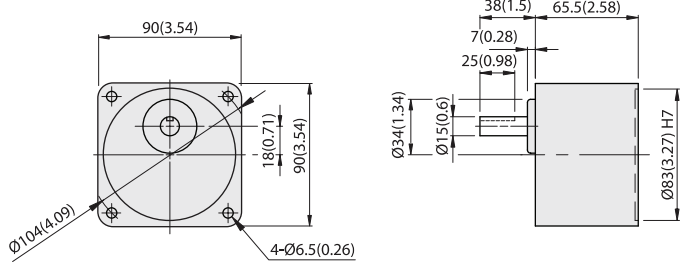


WEIGHT 0.6kg (1.3 lb)

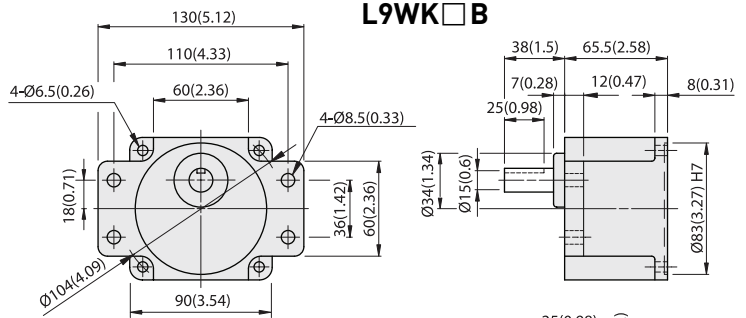


GEARHEAD

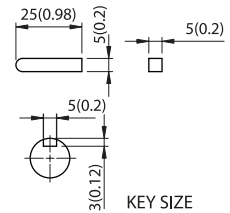
L9VK□B



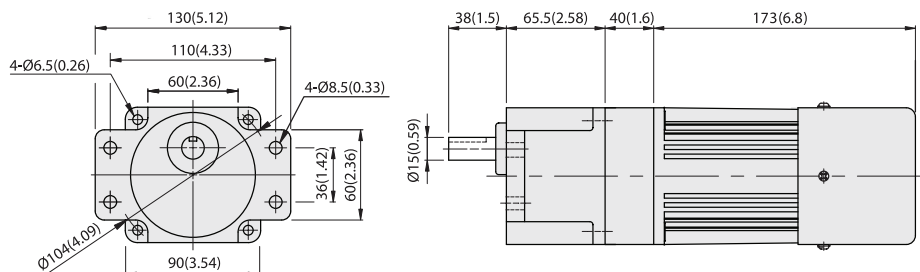
L9WK□B



MODEL	GEAR RATIO	WEIGHT		BOLT
		kg	lb	
L9VK□B	1/3~1/200	1.5	3.3	M6x95
L9WK□B	1/3~1/200	1.6	3.5	M6xL25



L9WK□B + L9V10D + L9R90P□HT



SPEED CONTROL REVERSIBLE MOTORS



GEARHEADS(ULTRA POWERFUL TYPE) Frame size 90mm sq. (3.54 in. sq.)

BALL BEARING TYPE

▶ **RATED TORQUE OF GEARHEAD**

MODEL	Speed(rpm)		500	300	200	120	100	60	50	30	20	15	10	9	6	5	3	2	1
	Ratio	Speed	3	5	7.5	12.5	15	25	30	50	75	100	150	166.7	250	300	500	750	1500
L9UK□B	High	kg-cm	17.5	29.2	43.7	65.7	78.8	118.8	142.6	237.6	300	300	300	300	300	300	300	300	300
	Low	kg-cm	11.9	19.8	29.8	44.7	53.7	80.9	97.0	161.7	216.8	289.1	300	300	300	300	300	300	300
L9V10D(DECIMAL)	High	N-m	1.71	2.86	4.29	6.44	7.73	11.64	13.97	23.28	29.40	29.40	29.40	29.40	29.40	29.40	29.40	29.40	29.40
	Low	N-m	1.17	1.94	2.92	4.38	5.26	7.92	9.51	15.85	21.25	28.33	29.40	29.40	29.40	29.40	29.40	29.40	29.40
	High	oz-in	243	405	607	912	1095	1650	1980	3300	4166	4166	4166	4166	4166	4166	4166	4166	4166
	Low	oz-in	165	276	413	621	745	1123	1347	2246	3011	4015	4166	4166	4166	4166	4166	4166	4166

- * The normal torque is that the motor and gearhead are directly coupled.
- * Insert the denominator of reduction ratio in □ of gearhead model name.
- * Actual rotation speed is 2-15% less than synchronous speed.
- * ■Color indicates that the rotation of gearhead shaft is in opposite direction as output shaft of motor.

With Decimal Gearhead

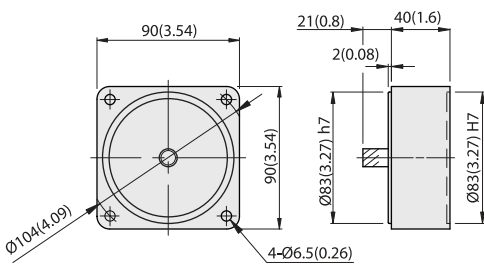
SPEED CONTROL
REVERSIBLE MOTORS

DIMENSIONS

Unit : mm(inch)

DECIMAL GEARHEAD

L9V10D

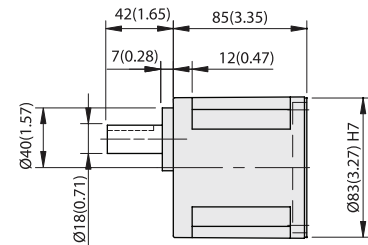
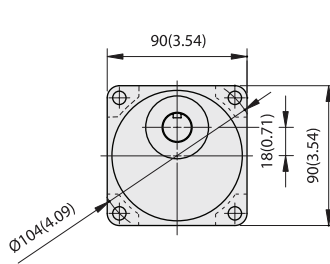


WEIGHT 0.6kg (1.3 lb)

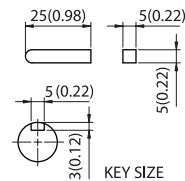


GEARHEAD

L9UK□B



MODEL	GEAR RATIO	WEIGHT		BOLT
		kg	lb	
L9UK□B	1/3~1/200	1.95	4.3	M6xL20



KEY SIZE



L9UK□B + L9R90P□HT

